

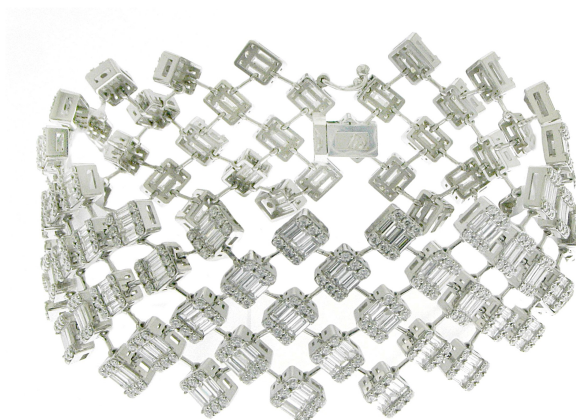


249 diamonds total approx. 10.91 ct
 Shape baguette
 Carat each approx. 0.04 ct
 Measurements each approx. 3.00 x 1.45 mm
 Colour Grade EW (E) - RW+ (F)
 Clarity Grade VS
 Symmetry G
 Setting channel

498 diamonds total approx. 5.04 ct
 Shape brilliant
 Carat each approx. 0.01 ct
 Measurements each approx. 1.30 mm
 Colour Grade RW+ (F) - RW (G)
 Clarity Grade VS
 Symmetry G
 Setting pavé

JEWELLERY REPORT
 N° J210000047319

June 02, 2021



ADDITIONAL INFORMATION
 PBL2449

DESCRIPTION

Type of Jewel **bracelet**
 Inscription **-**
 Description of Material **18k white gold**
 Total Weight of Jewel **42.52 g**
 Total Amount of Diamonds **747**
 Total Weight of Diamonds **15.95 ct**

COLOUR GRADES FOR SET DIAMONDS

EW+ (D) - EW (E)	EXCEPTIONAL WHITE +	D
EW (E) - RW+ (F)	EXCEPTIONAL WHITE	E
RW+ (F) - RW (G)	RARE WHITE +	F
RW (G) - W (H)	RARE WHITE	G
W (H) - STW+ (I)	WHITE	H
STW+ (I) - STW (J)	SLIGHTLY TINTED WHITE +	I
STW (J) - TW+ (K)	SLIGHTLY TINTED WHITE	J
TW+ (K) - TW (L)	TINTED WHITE +	K
TW (L) - TC (M-Z)	TINTED WHITE	L
	TINTED COLOUR	M-Z

CLARITY GRADES FOR SET DIAMONDS

LC	LOUPE CLEAN	LC
VVS	VERY VERY SMALL INCLUSIONS	VVS1
		VVS2
VS	VERY SMALL INCLUSIONS	VS1
		VS2
SI	SMALL INCLUSIONS	SI1
		SI2
P	PIQUÉ	P1
		P2
		P3

SETTING



JEWELLERY REPORT CHECK



Check your jewellery report online:
my.hrdantwerp.com

The stone(s) indicated by this jewellery report number have been identified as Natural Diamond(s)